

# The Major BBS<sup>®</sup>

*An  
Open  
Platform  
for  
Creating  
Your  
Own  
Online  
Service*



*“We estimate  
The Major BBS has  
saved us \$10,000  
in hardware costs  
alone.”*

*Chris Adler  
WordPerfect Corp.*



E-mail, group discussion forums, teleconferencing, file transfers, questionnaires: up to 256 simultaneous users can be doing all this, and much more, on your 386, 486, or Pentium-class desktop computer.

Use modems, LAN connections, serial ports and X.25 circuits interchangeably. Use our software locks and keys for airtight access security. Easily configure your menus, displays, reports, and user account classes to your exact requirements.

**Flexible**

**Configurable**

**Extensible**

**The Major BBS<sup>®</sup>**

This online platform consists of several powerful subsystems. The E-mail subsystem offers full-screen editing, mail networking, carbon copies, personal and global distribution lists, message importing, auto-forwarding, return receipts, and individual user preference settings. Your users can send and receive mail through Novell's MHS, and with software extensions, the **INTERNET**. Messages may have file "attachments," and may be posted either publicly or privately.

Message Forums (up to 3,500 of them!) can be used for discussion areas, keyword-searchable Q&A databases, classified ad listings, and many



***“The Major BBS is a powerful, multi-line bulletin board system with many built-in and available options, which is still easy even for a novice to set up and operate.”***

***John McCormick  
Newsbytes***

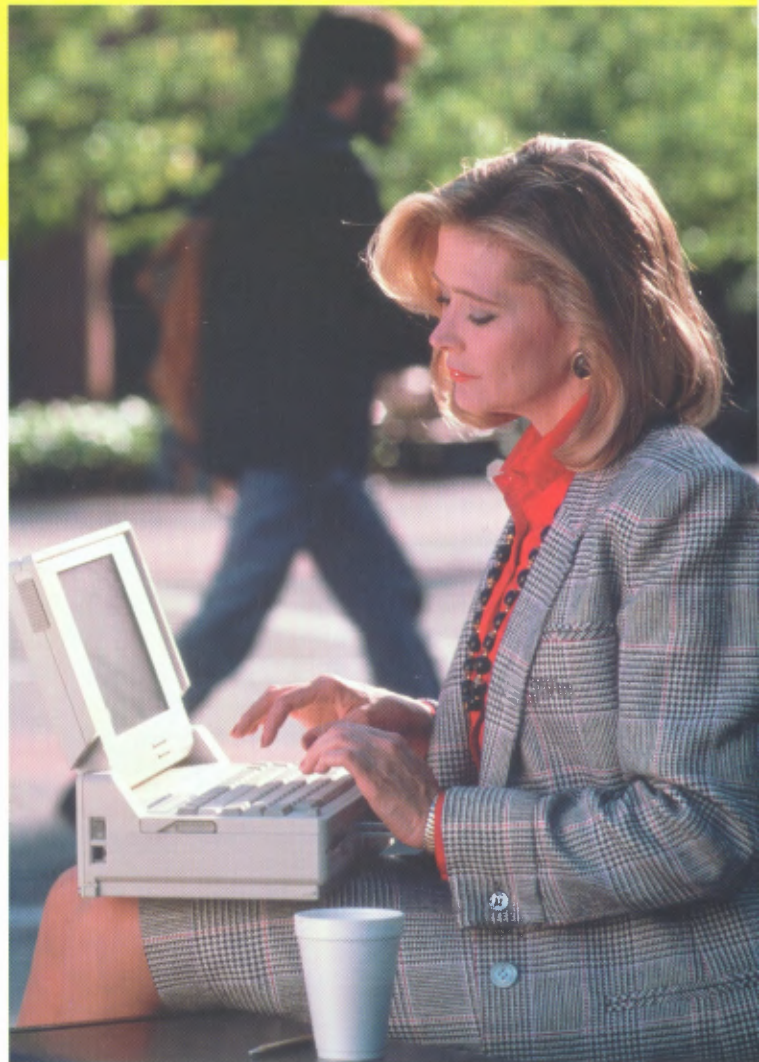
other purposes. As system operator, you may assign individual security access levels to each of your users in each of your Forums. Users may scan through messages chronologically, by topic, by conversation “thread,” by lists of keywords, or by unique message number. Users have instant access to their unread messages through the “quickscan” feature, and may request that Forum mail addressed to them also show up in their personal mailboxes. Files may be attached to messages, and networking tools are available for FidoNet, RelayNet, MajorNet, WorldLink, NetACCESS, and of course **INTERNET** newsgroups. You may also delegate special “Forum-Op” privileges, such as the ability to delete Forum messages and approve uploaded files for download.

Our built-in QWK-mail module gives your users the option to download their E-mail and Forum messages all at once. They can read and reply to these messages offline, then upload their reply packets, thus saving connect-time costs.

You can use the powerful File Library subsystem to offer software updates, documents, shareware, spreadsheets, or any other files for download. Users can scan for files by category, by file name, by file date, by upload date, by popularity, or using wildcards or Boolean keyword expressions. Files may be tagged for later download, or downloaded on the spot using ZMODEM, YMODEM, YMODEM-g, XMODEM, XMODEM-1K, KERMIT, Super KERMIT, or ASCII. Convenient pick lists, full-screen file info, and hot keys speed your users through the process. As system operator, you can control user security access, manage and review uploads from your users, offer CD-ROM files for download, etc. — or you can delegate these privileges to “Lib-Ops.”

The Polls and Questionnaires module is ideal for market research, application forms, opinion polls, and many other uses. It features intelligent branching, account macros, and auto-tallying of results. Users can be optionally notified about — or forced to take — new polls at log-on time. You can conditionally grant files, keys, or online time to users upon completion of a questionnaire.

How can you offer all of this, and much more, to up to 256 simultaneous users? Read on...



***“It was almost shocking how bids from the big VANs to provide similar services were \$100,000+ (with emphasis on the + side) more than we were able to do it in-house with The Major BBS.”***

***Nathan Hammond  
Baltimore Gas & Electric***



*“It’s amazing! Even with 62 users online at once — downloading files, reading mail, teleconferencing — there’s almost no slowdown at all.”*

*Kevin Ehlers  
Gateway 2000*

Combining blindingly fast interrupt processing with the use of protected-mode operation under DOS, The Major BBS supports many more simultaneous users at high baud rates than you might have thought possible. By using DOS for the host computer, rather than high-overhead multitaskers, we’ve freed up enough CPU resources to make massive parallel file downloading, graphical user interfaces, and real-time Sysop statistics displays truly practical.

**Ease of use**

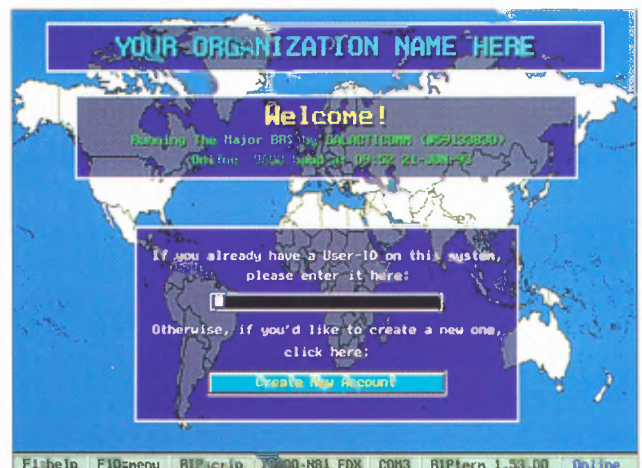
**High performance**

**Low cost**

**All in one**

**The Major BBS**

Online security is handled using “locks and keys.” The “Master” key gives you unlimited access throughout the system: look up user account information from any prompt; become “invisible” when you



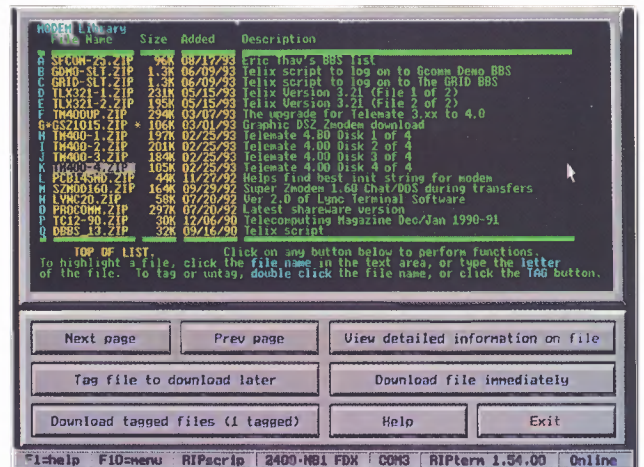
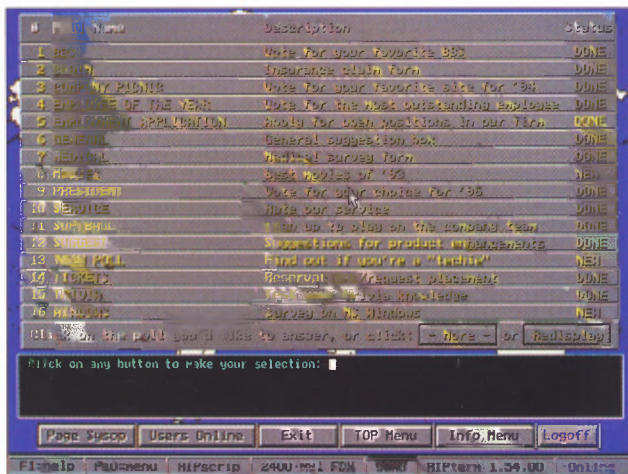
need privacy; enable and disable menu options quickly and easily; modify, move, approve or delete messages and files; create, delete, and manage Forums, Libraries, Polls, Doors, etc. From the Remote Operator Menu, choose from over 30 privileged commands: view real-time system statistics, maintain user account and security status, change the log-on message, start a timed event, issue basic DOS commands, and more. You’ll be able to manage the system effectively whether you’re across town or across the ocean.

Eight unique screens at the main console of the BBS provide information and special capabilities such as user account details; in-depth demographic and usage statistics and graphs; online user summary by channel; an audit trail of system activities; monitoring of channel input and status; and technical information about the system hardware and soft-

ware. Use the "emulate" feature to peek over a user's shoulder, or to step in and offer a helping hand. Or, you can log on locally to jump into a chat with a caller, or write a memo to your staff.

With The Major BBS, your online service can have a different look and feel from any other system. You can change almost every prompt, menu, and message displayed to users. Our multi-lingual/multi-protocol architecture lets callers select the interface of their choice. The English language interface for ANSI and RIPScrip (a mouse-driven, graphical user interface protocol) comes standard, and you can optionally add up to 50 simultaneous languages and presentation protocols. Use the built-in Menu Tree designer to organize the menus presented to your users: each selection can lead to another menu, or to a file display, or to a specific module such as E-mail, File Libraries, logoff, etc.

Create as many "classes" of users as you need, each with a time limit per call, time limit per day, options for billing, an expiration date, security "keyring," and much more. Generate printed reports on demand, such as user account listings, distribution of "keys," mailing labels, and system Audit Trail.



Around your office or around the world, your users can access your system. Use internal and external modems, as well as serial connections to other machines, at speeds up to 57.6K bps. Assign IPX Direct channels to specific workstations on your LAN.

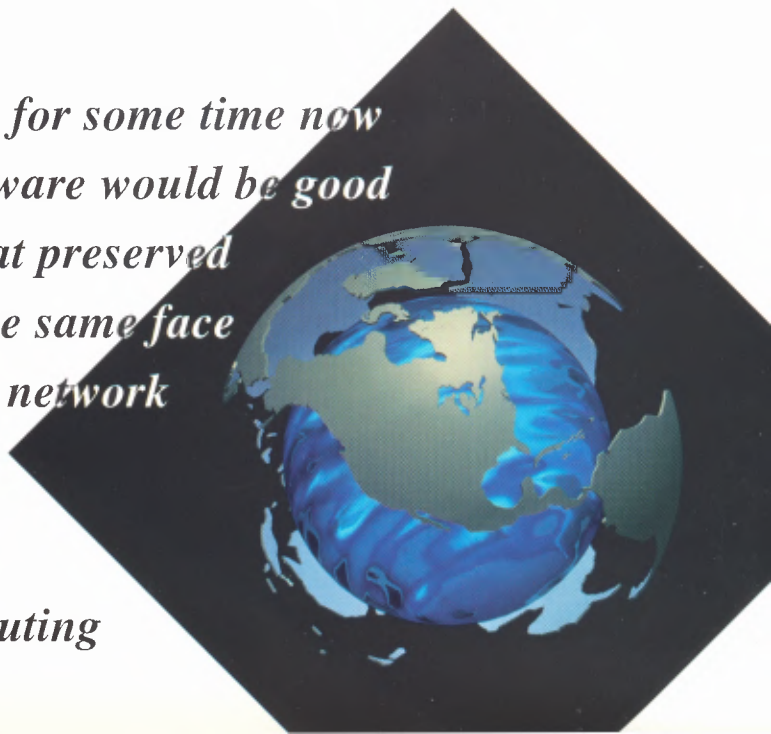
Add the **Advanced LAN Option** and you can configure IPX Virtual and SPX channel groups to actively "listen" for calls from anywhere on your LAN. The BBS actually becomes a server on your network (via Novell's Server Advertising Protocol), much the way a computer with a hard drive becomes a file server.

With the **X.25 Software Option** and a single-slot PC XNet card, you can directly hook up to X.25 networks such as SprintNet, CompuServe, and ADP. Your leased line then plugs directly into your computer, eliminating the need for a PAD — your X.25 service is efficient, reliable, and less expensive. (CCITT recommendations X.29 and X.3 are also fully supported.)

Widely available router technology and NetWare NLMs let you handle "telnet" connections from the **INTERNET**.

*"I love software like this. I have felt for some time now that the first really effective groupware would be good network-oriented BBS software that preserved dial-up capability and presented the same face to the user no matter where on the network that user accessed the BBS."*

**Barry Gerber**  
Network Computing





*“I was very impressed with Galacticom’s open architecture. Internet access, online databases, fax capability, and an easy-to-use experience, no other online platform for DOS, Windows, or Macintosh.”*

Everyone has a different vision of what the perfect Bulletin Board System would be. That’s why it’s important to choose software that will give you the flexibility to implement *your* vision. The Major BBS gives you this freedom.

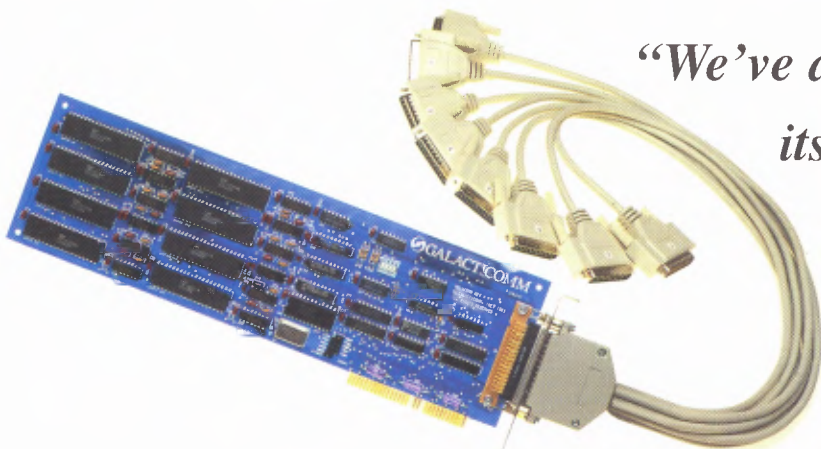
Integrate up to 15 megabytes of off-the-shelf add-on options. Installation is as easy as “A:INSTALL”. The Major BBS takes full advantage of DLL technology to dynamically link these options into your system. Use the Menu Tree designer to place new options in the most convenient location. Full security control lets you decide which users will have access to these services.

Take advantage of fax/modem technology with the **Fax/Online Add-on Option**. Provide fax-mail services to your users, as well as a document database for fax requests — a “hard copy” information server that can be utilized by your prospects, customers, and field sales staff.

Why be 74026.8073@compuserve.com when you can be *yourname@yourcorp.com*? Plug into the “information superhighway” of the Internet with **Major Gateway/Internet**. This UUCP-based solution lets you make regular “mail runs” for Internet mail and newsgroup feeds. Authorized users can write outgoing messages and establish their own Internet addresses on your system. A “remote archive server” feature lets you make files available worldwide to anyone who has access to an Internet messaging host. Support for PageSat™ and other satellite newsgroup providers is included.

Online database power can be added with **The Major Database**. No programming required — all search and data entry procedures are created with an easy-to-use configuration utility. Full access-level control is provided, and the software automatically prevents conflicts when multiple users need to access the same records. The B-Tree key index is amazingly fast and works for databases up to 1,000,000 records.

For document-oriented database applications, choose the **Search and Retrieve Add-on Option**. Thousands of text files can be organized into categories, along with accompanying JPEG graphic files and fax-ready files (works with the Fax/Online engine). Users can perform simple or advanced keyword searches and then view or download documents that match their criteria.



*“We’ve appreciated the expandability of its open architecture. The Major BBS allows us to integrate with disparate products.”*

